

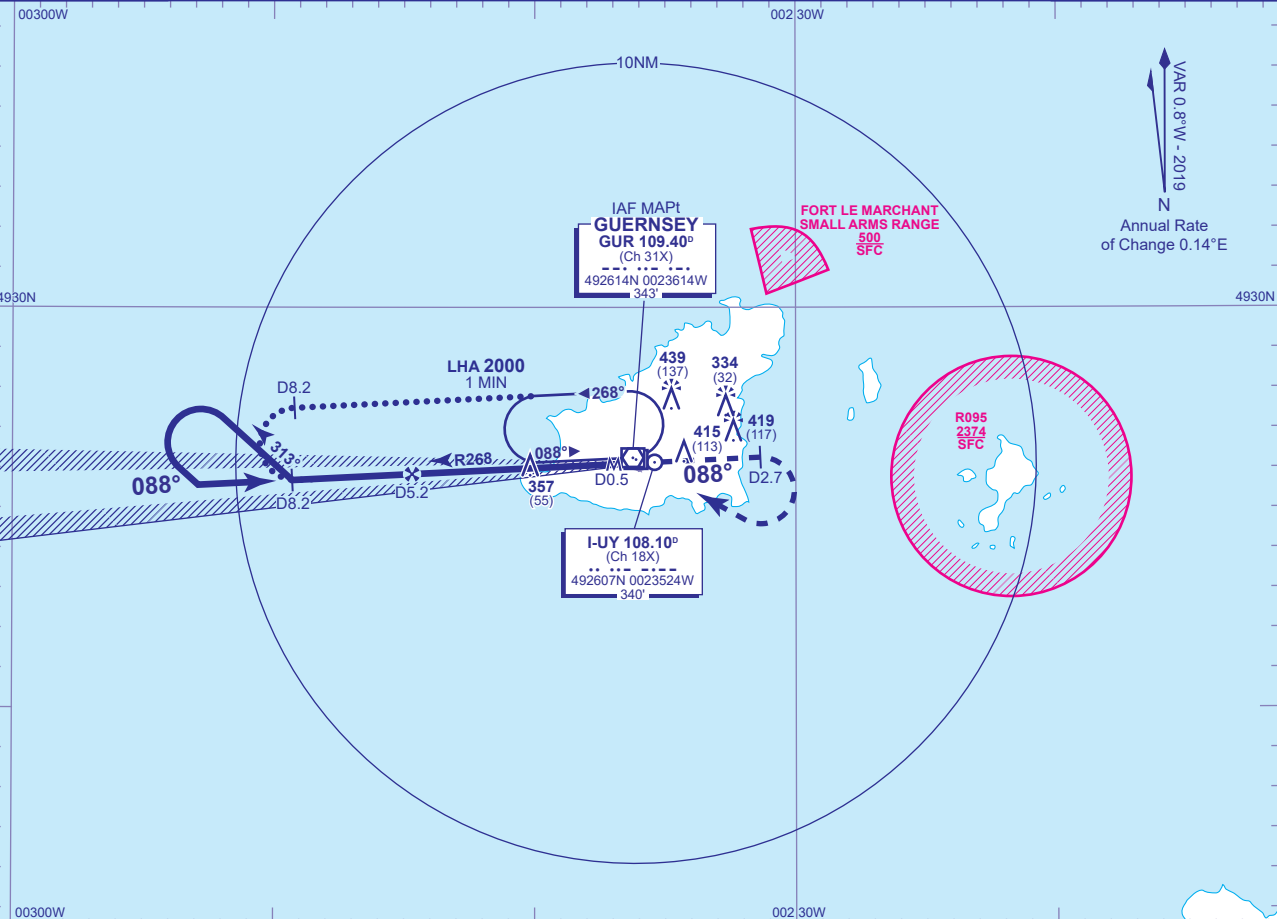
INSTRUMENT APPROACH CHART - ICAO

GUERNSEY
LOC/DME/VOR
RWY 09
(ACFT CAT A,B,C,D)

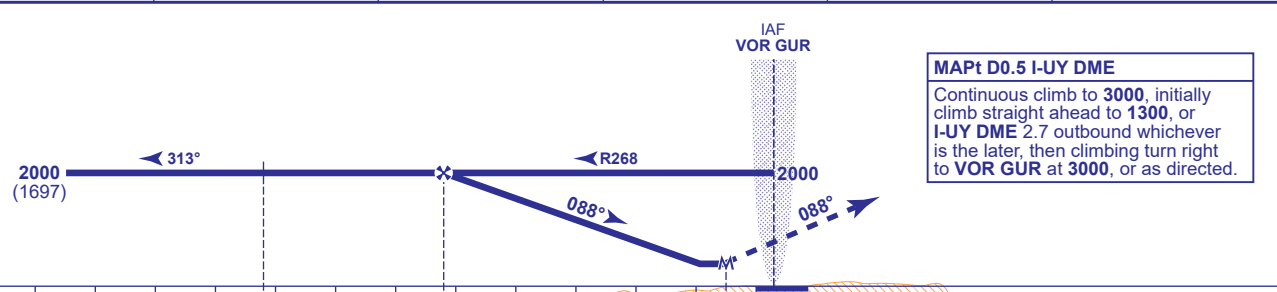


APP	128.655	GUERNSEY APPROACH	AD ELEVATION	336
TWR	119.955	GUERNSEY TOWER	THR ELEVATION	302
GMC	121.805	GUERNSEY GROUND	OBSTACLE ELEVATION	439 AMSL (137) (ABOVE THR)
RAD	124.505	GUERNSEY RADAR	BEARINGS ARE MAGNETIC	
ATIS	109.400	GUERNSEY INFORMATION		

TRANSITION ALTITUDE
5000



RECOMMENDED PROFILE Gradient 5.24%, 320FT/NM					
DME I-UY	5	4	3	2	1
ALT(HGT)	1950(1648)	1630(1328)	1310(1008)	990(688)	670(368)



MAPt D0.5 I-UY DME
Continuous climb to **3000**, initially climb straight ahead to **1300**, or I-UY DME 2.7 outbound whichever is the later, then climbing turn right to VOR GUR at **3000**, or as directed.

Aircraft Category		A	B	C	D	Rate of descent	G/S KT	160	140	120	100	80
OCA (OCH)	Procedure	630(328)	630(328)	630(328)	630(328)		FT/MIN	850	740	640	530	420
VM(C)OCA (OCH AAL)	Total Area	830(494)	830(494)	930(594)	1030(694)							

ALTERNATIVE PROCEDURE EXTENDED HOLDING PATTERN
Arrival at VOR GUR at 2000. Extend the outbound leg of the VOR GUR holding pattern to I-UY DME 8.2 then turn left to establish on LOC. When established, descend to MDA(H).

NOTE Aircraft will normally be required to hold not lower than 3000.

CHANGE (10/23): GUERNSEY RADAR FREQUENCY.